

15 Hex Bar IP



Light Efficiency:

43 Lumen/Watt

Output: 1107 lm

Light Quality:

CRI: 68.6

Peak: 5159 cd

Color Temperature:

7386 K

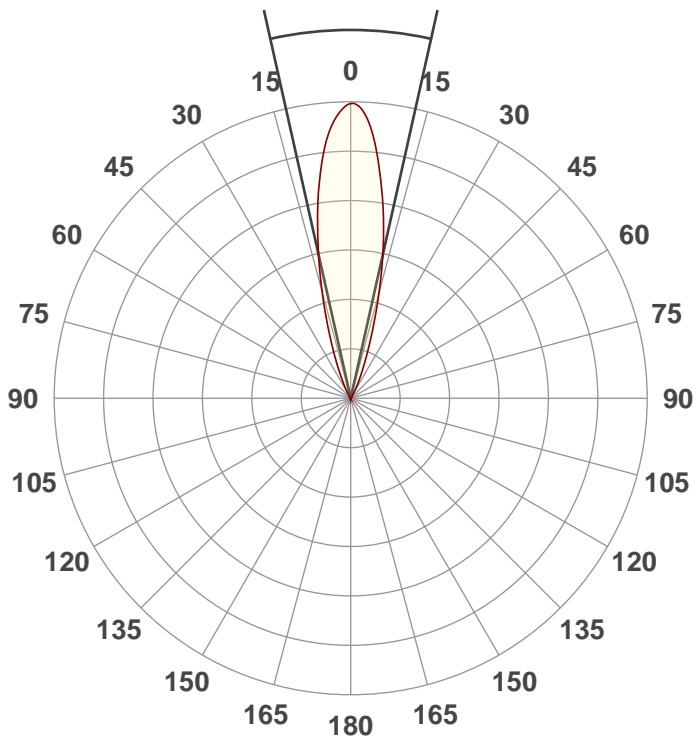
Power: 26.0 W

PF: 0.95



Beam Angle

25.2°



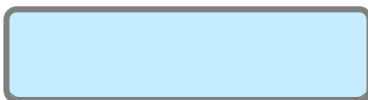
Test:

White

Date:

8/21/2019

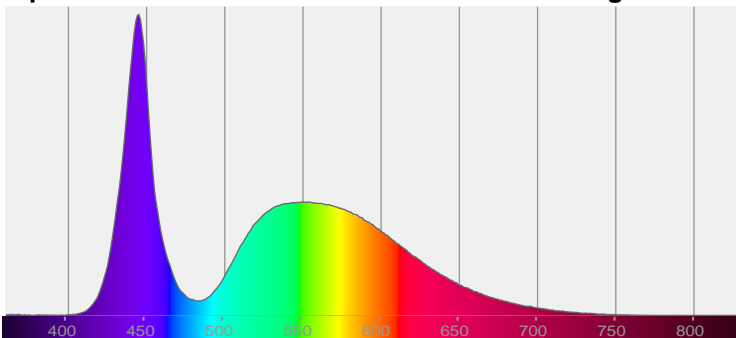
Note:



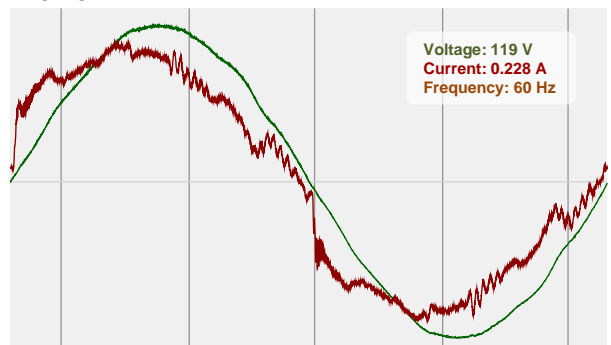
CIE 1931
x: 0.303
y: 0.308

Spectra

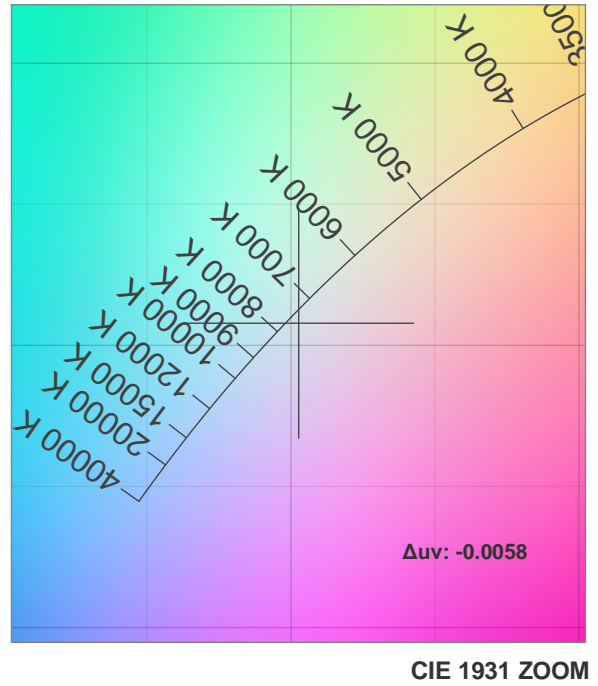
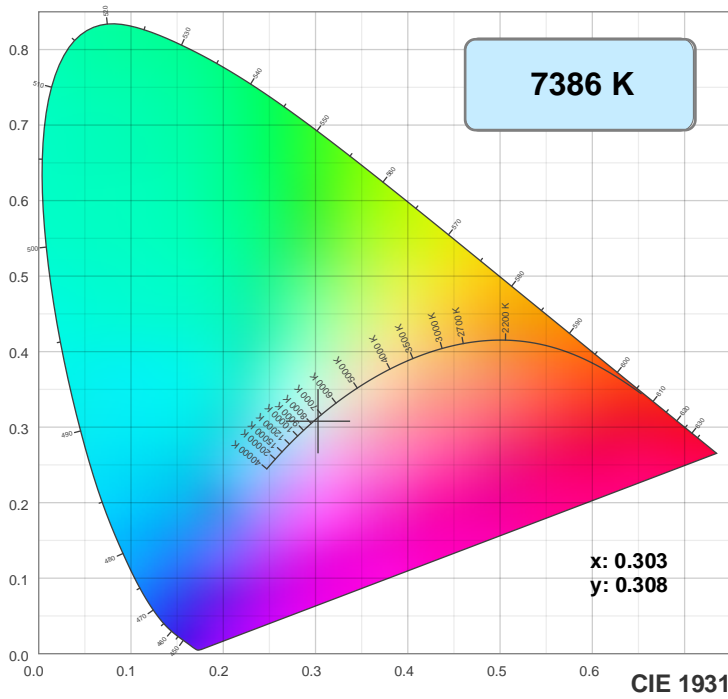
Dominant Wavelength: 443nm



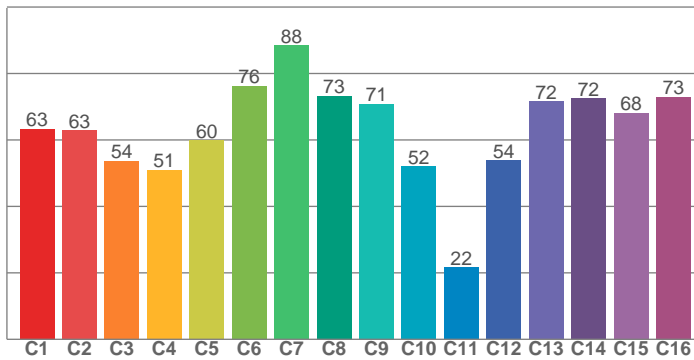
Power



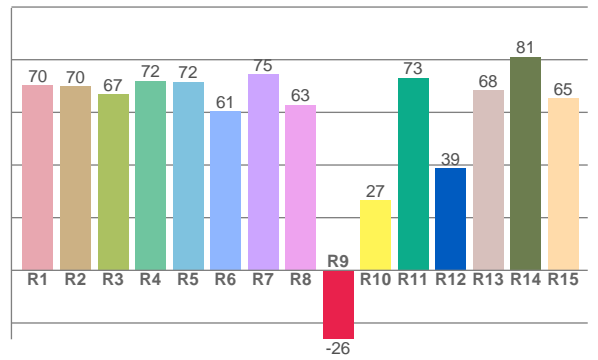
Color Details



TM30: 62.6



CRI: 68.6 (R1-R8)



CRI R values, only R1-R8 are used to calculate final CRI value

R1	R2	R3	R4	R5	R6	R7	R8	R9	R10	R11	R12	R13	R14	R15
70.4	70.0	66.9	72.0	71.7	60.5	74.6	62.9	-26.2	26.6	73.2	38.7	68.5	81.2	65.3

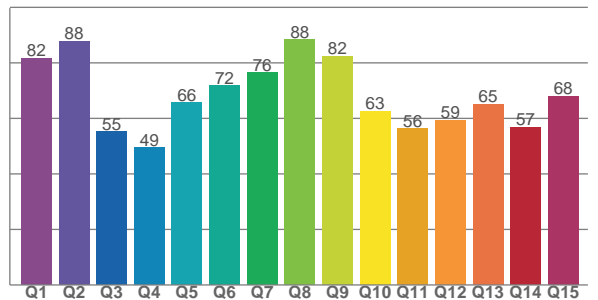
TM30 C values, 16 binned values out of total of 99 C values

C1	C2	C3	C4	C5	C6	C7	C8	C9	C10	C11	C12	C13	C14	C15	C16
63.3	62.9	53.7	51.0	59.8	76.2	88.5	73.2	70.9	52.0	21.6	53.8	71.5	72.4	68.2	72.9

CQS Q values

Q1	Q2	Q3	Q4	Q5	Q6	Q7	Q8	Q9	Q10	Q11	Q12	Q13	Q14	Q15
81.7	87.9	55.3	49.4	65.6	71.9	76.5	88.3	82.4	62.5	56.2	59.4	65.2	56.8	68.1

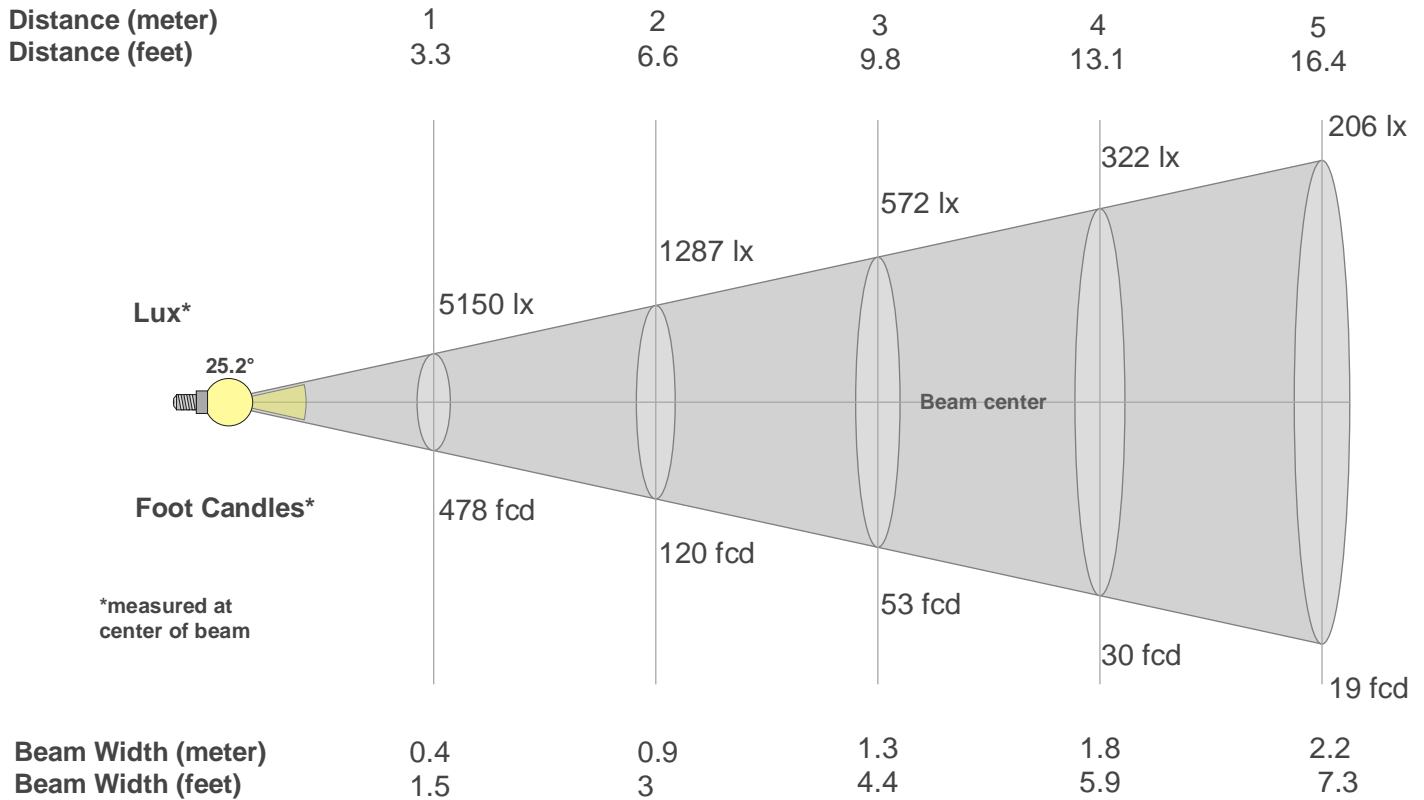
CQS: 66.2



Color Parameters

Color Temperature	Color Rendering Index	Red Component	Color Fidelity	Color Gamut	Color Quality Scale	Color Coordinate CIE 1931	Color Coordinate CIE 1931	Color Coordinate	Color Coordinate	Color Deviation from Black Body
CCT	CRI	CRI R9	TM30 Rf	TM30 Rg	CQS	x	y	u	v	Δuv
7386 K	68.6	-26.2	62.6	95.4	66.2	0.303	0.308	0.199	0.303	-0.0058

Beam Details



Beam Intensities from 1-20m

m	1	2	3	4	5	6	7	8	9	10	11	12	13	14	15	16	17	18	19	20
ft	3.3	6.6	9.8	13.1	16.4	19.7	23	26.2	29.5	32.8	36.1	39.4	42.7	45.9	49.2	52.5	55.8	59.1	62.3	65.6
lx	5150	1287	572	322	206	143	105	80	64	51	43	36	30	26	23	20	18	16	14	13
fcd	478.4	119.6	53.2	29.9	19.1	13.3	9.8	7.5	5.9	4.8	4	3.3	2.8	2.4	2.1	1.9	1.7	1.5	1.3	1.2

Intensities in 0° C-plane

0°	2°	4°	6°	8°	10°	12°	14°	16°	18°	20°	22°	24°	26°	28°	30°	32°	34°	36°	38°
5150	5031	4777	4393	3887	3330	2745	2200	1687	1246	893	624	425	280	180	107	58	26	12	7
100%	98%	93%	85%	75%	65%	53%	43%	33%	24%	17%	12%	8%	5%	3%	2%	1%	1%	0%	0%

Intensities in 90° C-plane

0°	2°	4°	6°	8°	10°	12°	14°	16°	18°	20°	22°	24°	26°	28°	30°	32°	34°	36°	38°
5150	5031	4777	4393	3887	3330	2745	2200	1687	1246	893	624	425	280	180	107	58	26	12	7
100%	98%	93%	85%	75%	65%	53%	43%	33%	24%	17%	12%	8%	5%	3%	2%	1%	1%	0%	0%

Intensities in 180° C-plane

0°	2°	4°	6°	8°	10°	12°	14°	16°	18°	20°	22°	24°	26°	28°	30°	32°	34°	36°	38°
5150	5082	4787	4339	3812	3287	2746	2192	1662	1217	864	605	416	278	175	98	51	21	9	3
100%	99%	93%	84%	74%	64%	53%	43%	32%	24%	17%	12%	8%	5%	3%	2%	1%	0%	0%	0%

Intensities in 270° C-plane

0°	2°	4°	6°	8°	10°	12°	14°	16°	18°	20°	22°	24°	26°	28°	30°	32°	34°	36°	38°
5150	5082	4787	4339	3812	3287	2746	2192	1662	1217	864	605	416	278	175	98	51	21	9	3
100%	99%	93%	84%	74%	64%	53%	43%	32%	24%	17%	12%	8%	5%	3%	2%	1%	0%	0%	0%

Beam Angle 50%	Field Angle 10%	Cutoff Angle 2,5%	Intensity Ratio in 120° Cone	Intensity Ratio in 90° Cone
25.2°	45.9°	58.5°	100.0%	99.9%